

Bristol Highlands
Commerce Center
West
Bristol, Wisconsin

HSA
COMMERCIAL REAL ESTATE





Bristol
Business Park

Bristol Highlands
Commerce Center West

COUNTY HIGHWAY U

GREENWAY

Bristol Highlands
Commerce Center



128TH AVENUE

ULINE

C.T.H. "Q" / 104TH STREET



Approx. 29 Ac

CONSERVANCY

GOLDBEAR DRIVE



128TH A

GREENWAY

120TH AVE. / W. FRONTAGE RD.

INTERSTATE 94



Site Planning

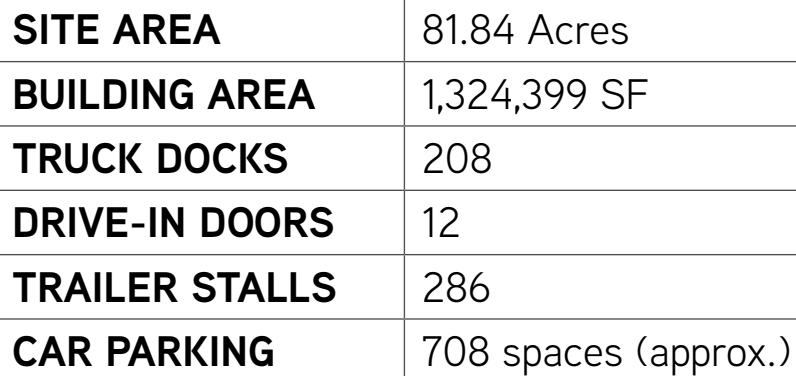
- 3 building campus like setting developed on a speculative basis
- Buildings designed to be divided with units ranging in size from 178,236 to 550,377 sf
- Service the needs of tenants looking for office/distribution, assembly and light manufacturing
- Constructed in 3 phases
- Open space 35%



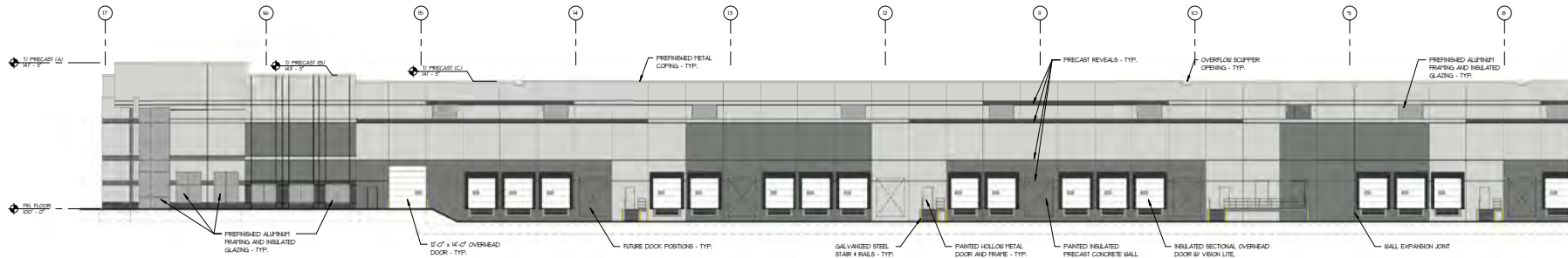
Building Specifications

- "Class A" Investment Grade Development
- Precast Construction with architectural details
- Generous window line
- Enhanced landscaping
- 36'-40' clear, project 3-5% office buildout
- Truck docks screened by berms and landscaping
- 10' landscaped berm on the north property line
- Undulating landscaped berms along HWY U
- Four entrances with monument signage
- Projected 750-1000 employees when fully-developed

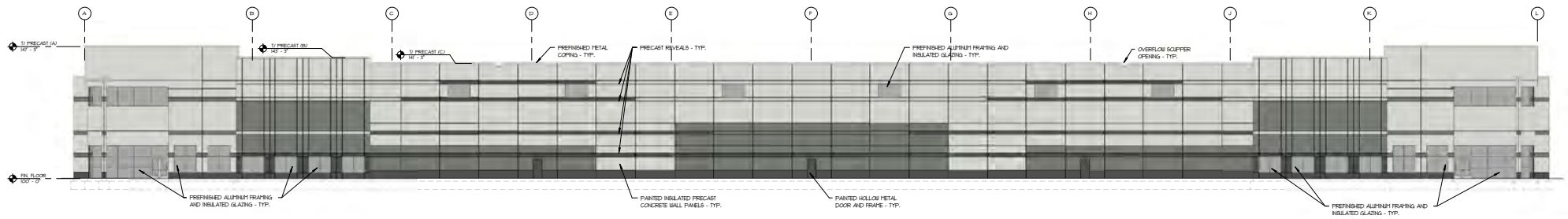






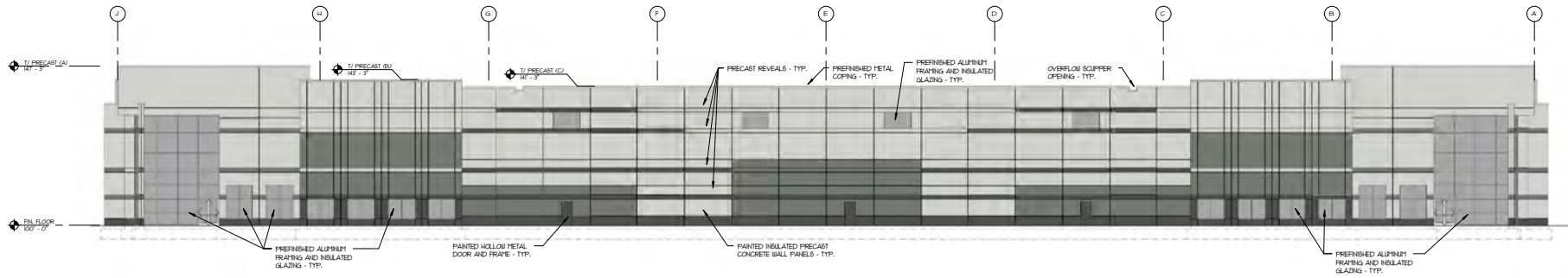


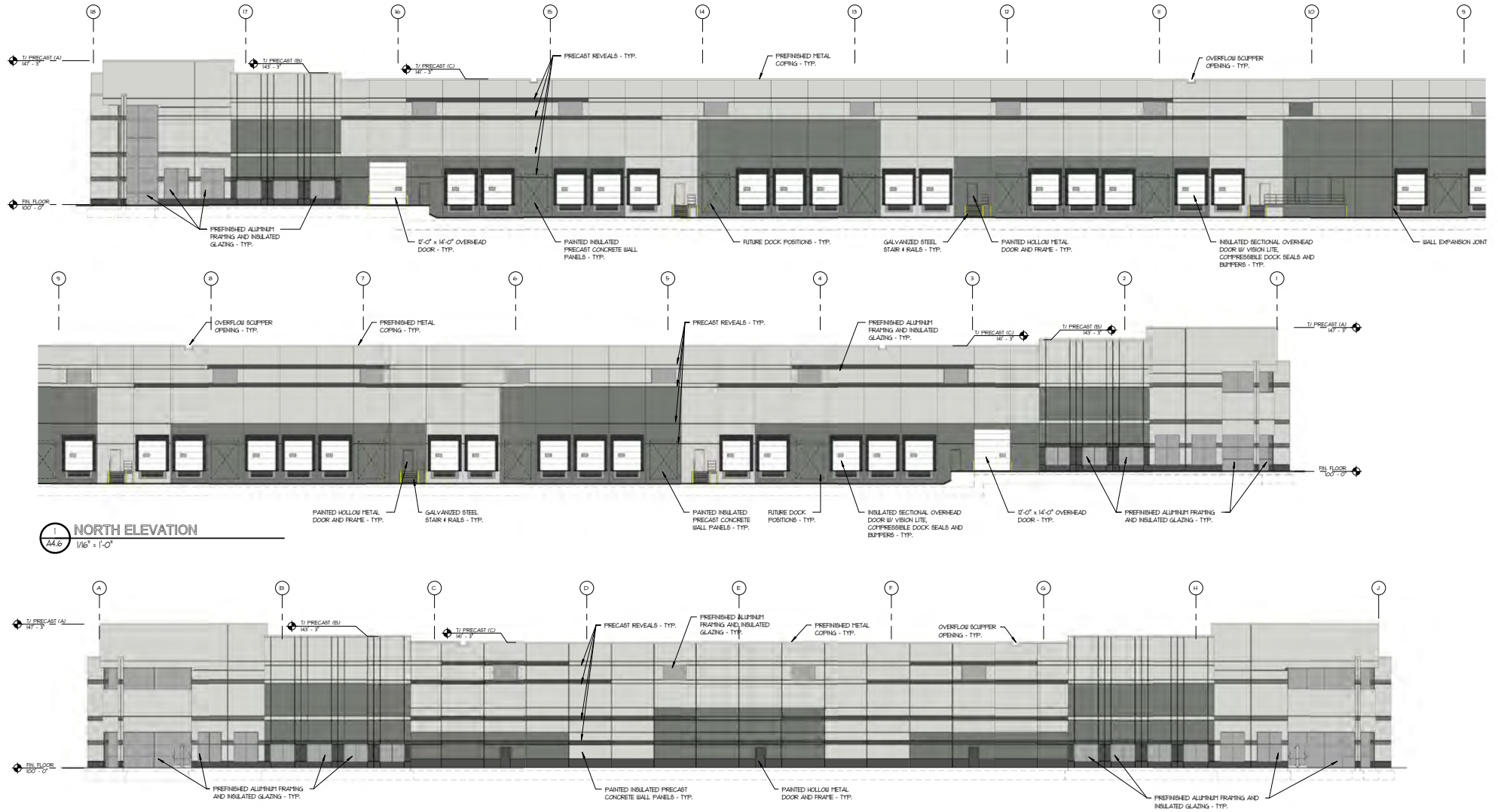
1 NORTH ELEVATION
1/16" = 1'-0"

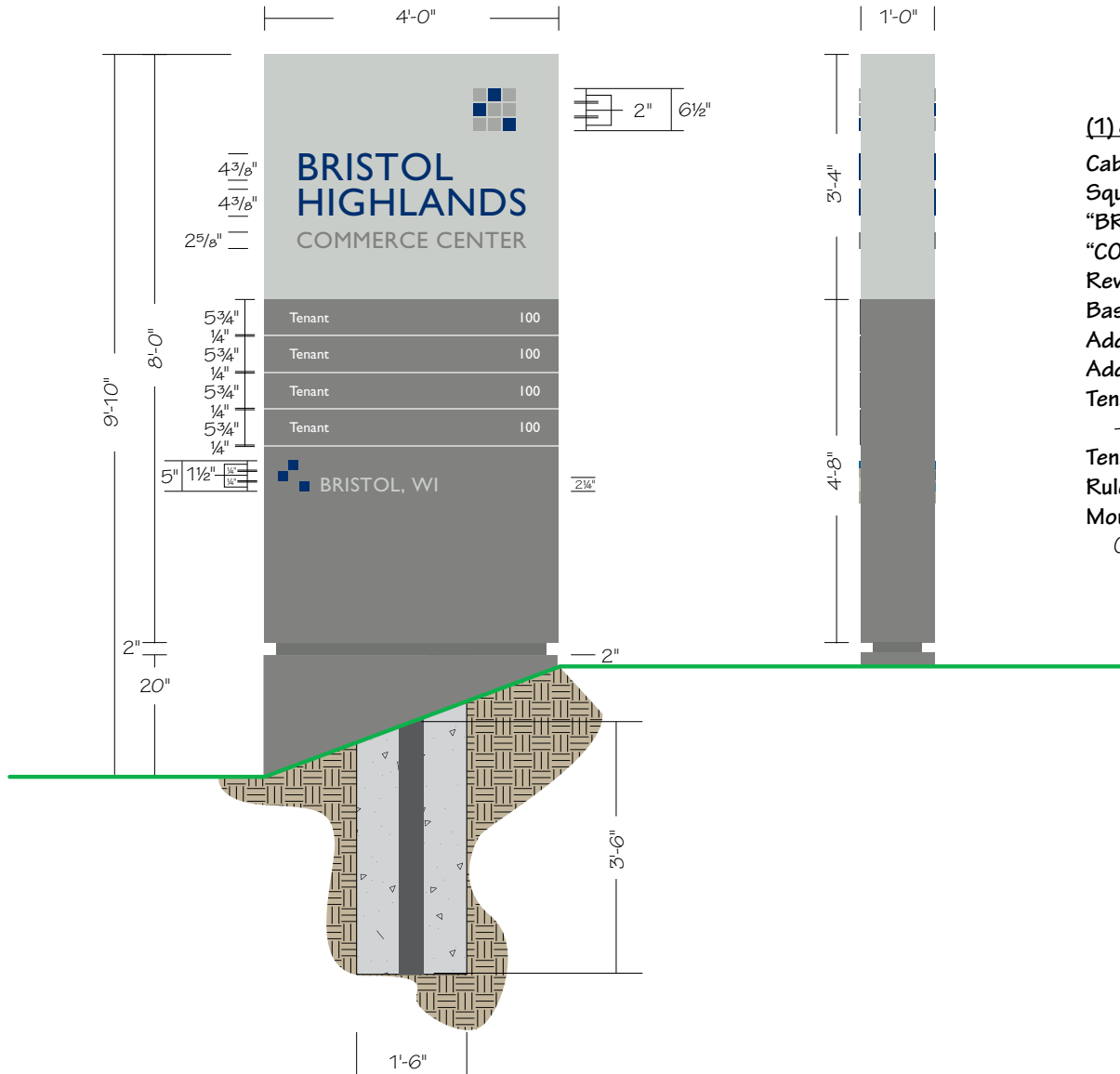












(1) 8'-0" x 4'-0" x 12" Double Face Non-Illuminated Monument Sign

Cabinet: Fabricated Aluminum Painted SW7064 Passive & SW7067 Cityscape

Square Logo: 1/4" FCO Alum. Painted SW7066 Gray Matters & PMS 294 Blue

"BRISTOL HIGHLANDS": 1/4" FCO Alum. Painted PMS 294 Blue

"COMMERCE CENTER": 1/4" FCO Alum. Painted SW7067 Cityscape

Reveal: 2" Alum. Painted SW7067 Cityscape

Base: Fabricated Alum. Painted SW7067 Cityscape

Address Copy: Gill Sans Font - 1/4" FCO Alum. Painted SW7064 Passive

Address Squares: 1/4" FCO Alum. Painted PMS 294 Blue

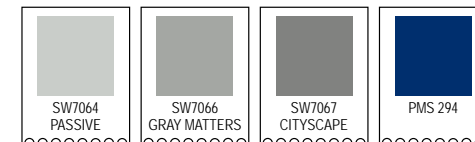
Tenant Panels: .125" Alum. Painted SW7067 Cityscape

- Attach with Counter Sunk Screws

Tenant Copy: Gill Sans Font - 3M 7725-10 White Vinyl

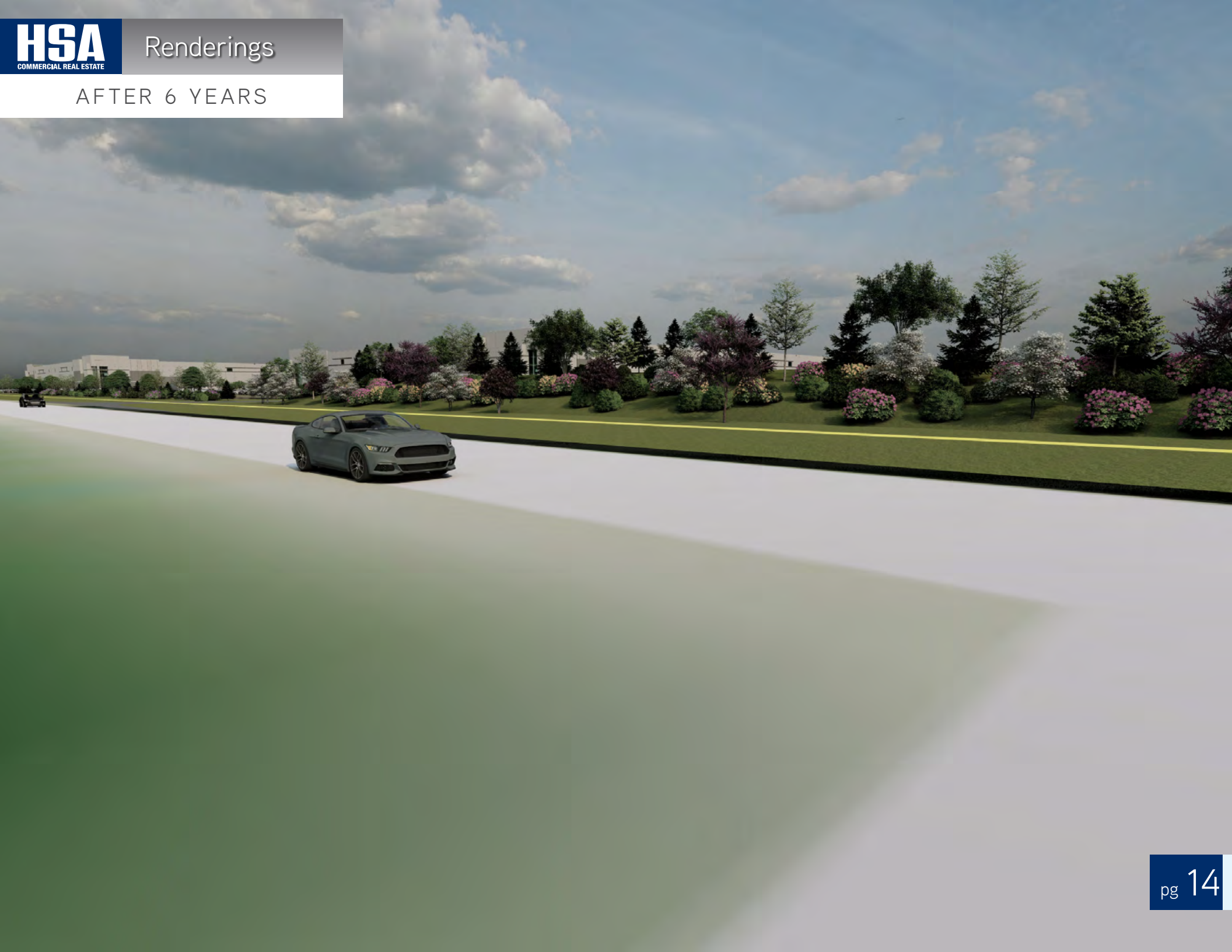
Rules Between Tenant Panels: Painted SW7064 Passive

Mounting: 4" Sch. 40 Steel Column set into 1'-6" Diameter x 3'-6" Deep Concrete Pier Foundation





AFTER 6 YEARS



AFTER 6 YEARS



Bristol Highlands Commerce Center West

3 buildings | 1.3 million square feet | Bristol, Wisconsin

HSA
COMMERCIAL REAL ESTATE

