

FOR LEASE South I-355 Medical Office Space

15900 West 127th Street | Lemont, Illinois

**ONE MONTH FREE
NET RENT PER TERM YEAR***



Property Highlights

- Lemont Professional Center addresses the strong population growth and need for outpatient services and physicians for the residents of the south I-355 corridor communities
- Immediate access to interchange at 127th Street and the I-355 extension
- Beautiful campus setting
- Fully improved medical and dental suites available
- Over 200 parking spaces in lighted lot
- Current medical facilities in the building include: walk-in care center, orthopedics, radiology, ophthalmology, OB/GYN, pediatrics, internal medicine, and dental care
- Professionally managed by HSA PrimeCare
- A **ColonyCapital** property

Suite	Sq. Ft. Available	Condition
220*	1,150 SF	Shell
230*	1,416 SF	Ready Medical Office Suite
200	1,891 SF	Ready Medical Office Suite
240*	1,909 SF	Ready Medical Office Suite
241	3,088 SF	Ready Office Suite
201	1,537 SF	Ready Medical Office Suite
*4,475 SF of contiguous space is available on the 2nd floor.		

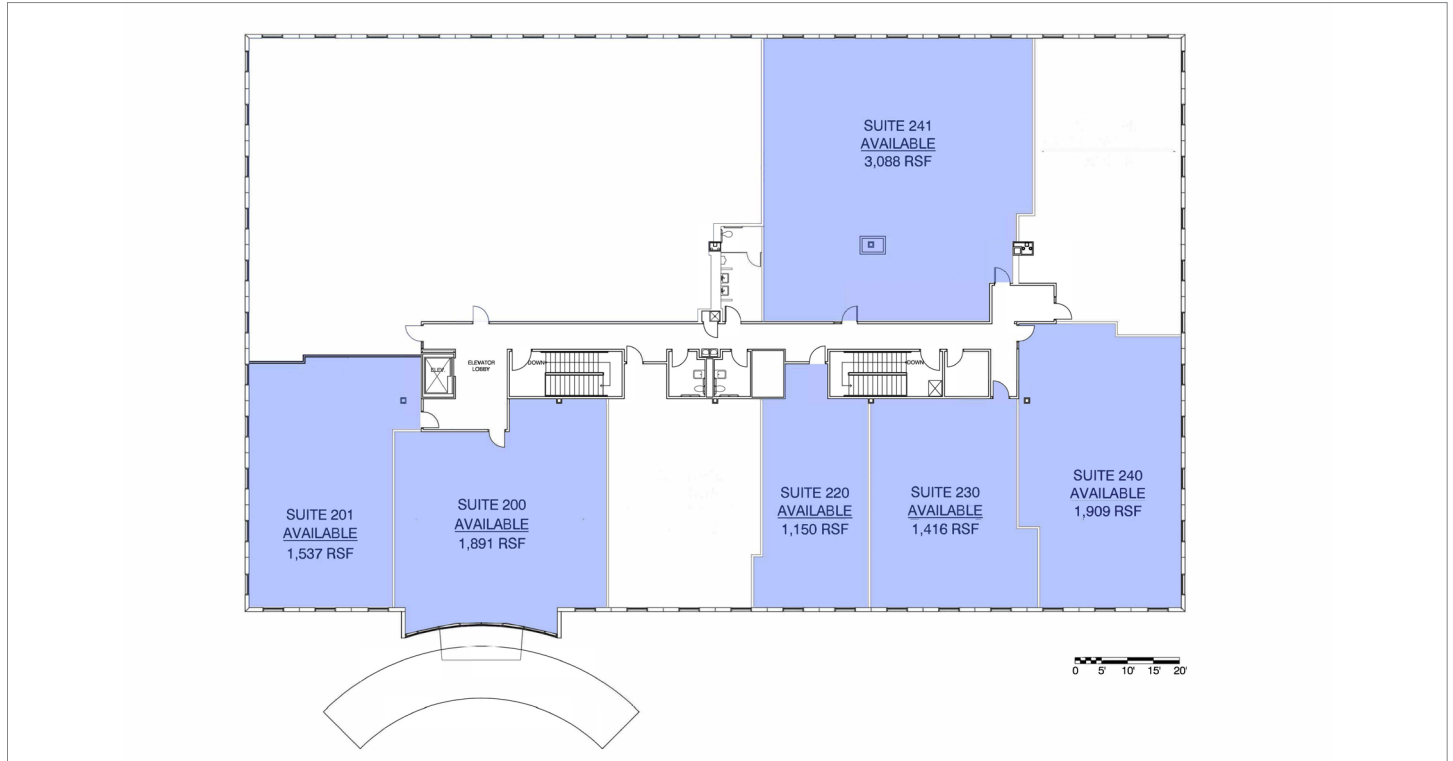
Contact

Robert Titzer
 p 312.458.4468
 rtitzer@hsacommercial.com

FOR LEASE South I-355 Medical Office Space

15900 West 127th Street | Lemont, Illinois

Floor Plan - 2nd Floor



Location

