

FOR LEASE New Move-In Ready Medical Suites Available!

1012 West 95th Street | Naperville, Illinois



Property Highlights

- **1,801 SF - 6,276 SF available**
- Move-in ready medical suites
- Ample Parking: 5.5 spaces per 1,000 SF
- Easily accessible for patients in Naperville, Plainfield, Aurora, and Bolingbrook
- Highly visible location at the intersection of 95th Street and Plainfield-Naperville Road
- Close proximity to major hospitals, including AMITA Hospital (7 miles), Edward Hospital (4.5 miles), & Rush-Copley (7 miles)
- Professionally managed by HSA PrimeCare

Medical Suites Available:

Suite	SF Available	Condition
7*	1,801 SF	Move-In Ready Medical Suite with 5 exam rooms
4*	4,475 SF	Move-In Ready Medical Suite with 10 exam rooms
**Combine to 6,276 SF		

Contact

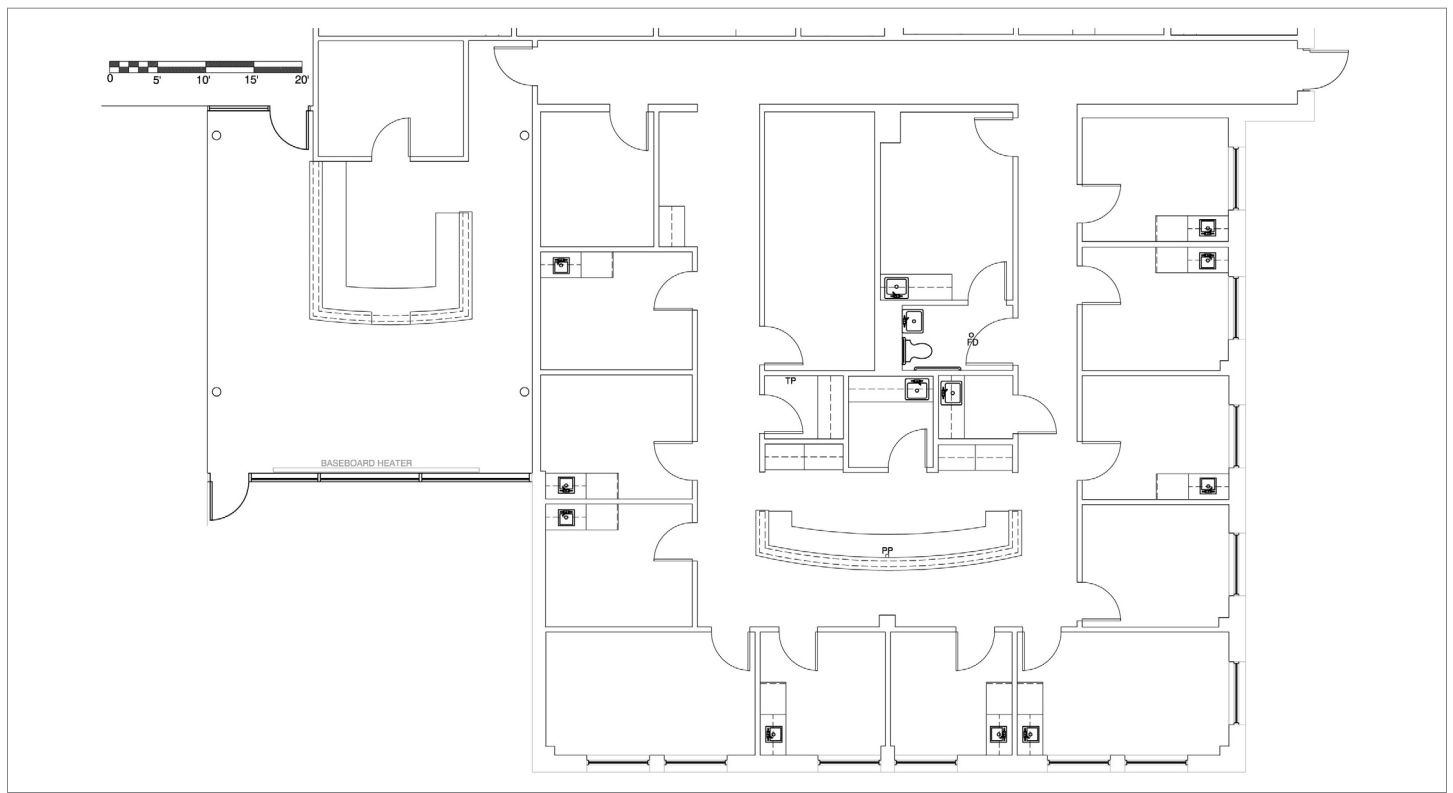
Robert Titzer
 p 312.458.4468
 rtitzer@hsacommercial.com

Margaret Gaca
 p 312.683.7255
 mgaca@hsacommercial.com

FOR LEASE New Move-In Ready Medical Suites Available!

1012 West 95th Street | Naperville, Illinois

Suite 4 (4,475 RSF) Floor Plan:



Suite 7 (1,801 RSF) Floor Plan:

