

AVAILABLE Redevelopment of 3.6 AC Across from New Woodman's

20 South Gary Avenue | Bloomingdale, Illinois



Property Profile

Space Available	+/- 22,367 SF on 3.6 AC site
Area Retailers	Woodman's, Mariano's, Meijer, Hobby Lobby, Lifetime Fitness
Traffic Counts	28,544 VPD (Gary Ave)

Demographics

	1 mile	3 miles	5 miles
Population	6,268	104,948	255,743
Average HHI	\$112,557	\$104,781	\$105,694
Households	2,619	37,426	91,627
Employment	7,307	41,762	99,729

Property Highlights

- Existing 22,367 SF anchor box on prime 3.6 AC site available for redevelopment
- 230,000 SF Woodman's under construction across the street
- Strong daily needs traffic drivers nearby including: Mariano's, Meijer, Costco, and LifeTime Fitness

Contact

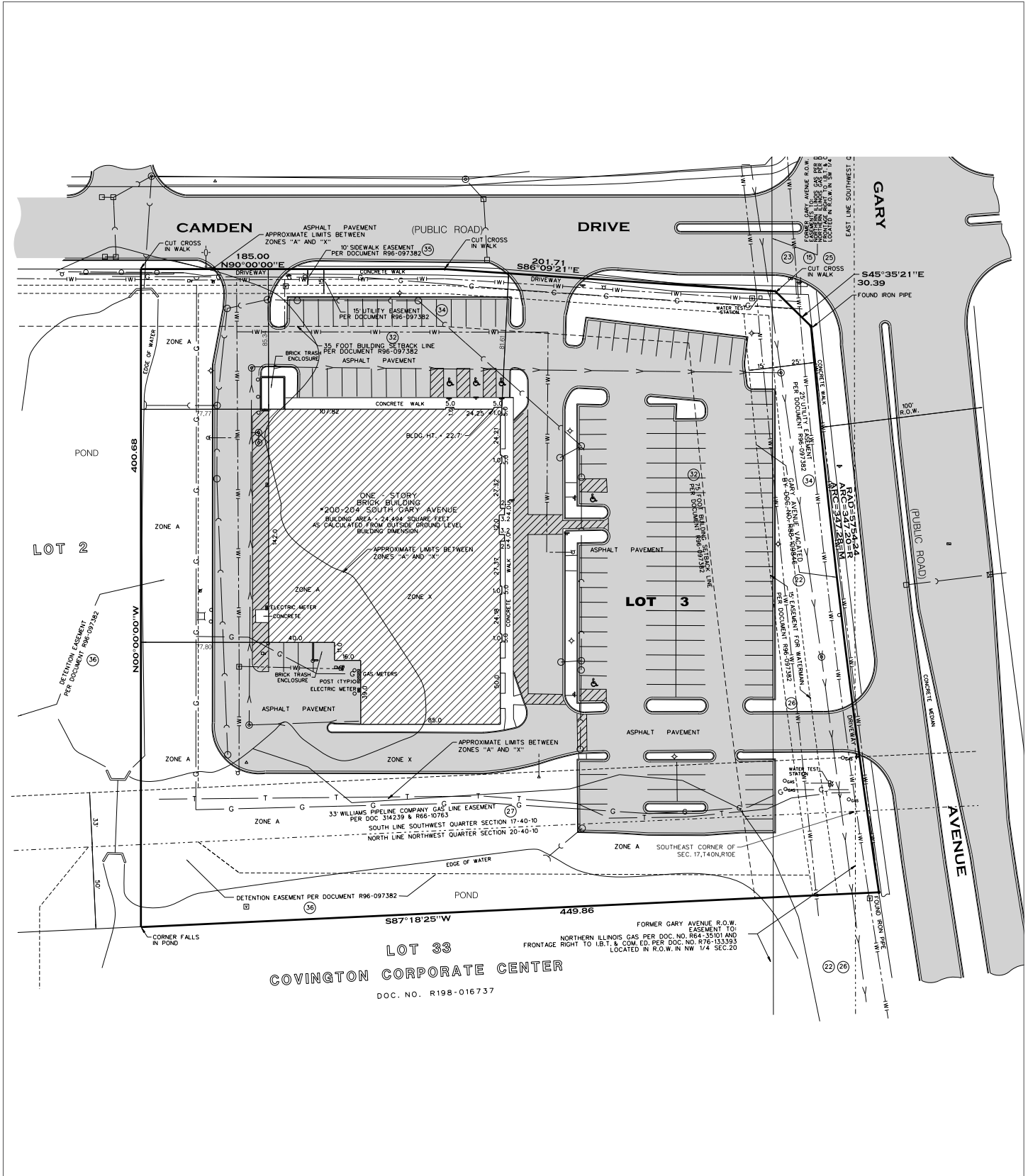
Michael Havdala
 p 312.458.4318
 mhavdala@hsacommercial.com



AVAILABLE Redevelopment of 3.6 AC Across from New Woodman's

20 South Gary Avenue | Bloomingdale, Illinois

Survey





AVAILABLE Redevelopment of 3.6 AC Across from New Woodman's 20 South Gary Avenue | Bloomingdale, Illinois

Market Aerial

