

SILVER CROSS MEDICAL OFFICE PAVILION

New Medical Office Pavilion Development at Silver Cross Hospital



ABOUT THE BUILDING

1851 Silver Cross Boulevard, New Lenox, IL

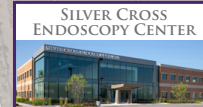
- **New opportunity to be on-campus at the award-winning, Silver Cross Hospital!**
- Two-story, 40,000 SF, state-of-the-art medical office building
- Medical suites custom designed for your practice



- Dedicated surface parking lot with canopied patient/visitor drop off
- Lead Tenants: Silver Cross Urgent Care, Occupational Health, & Primary Care Clinics
- Completion: 4th Quarter 2019

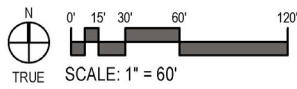
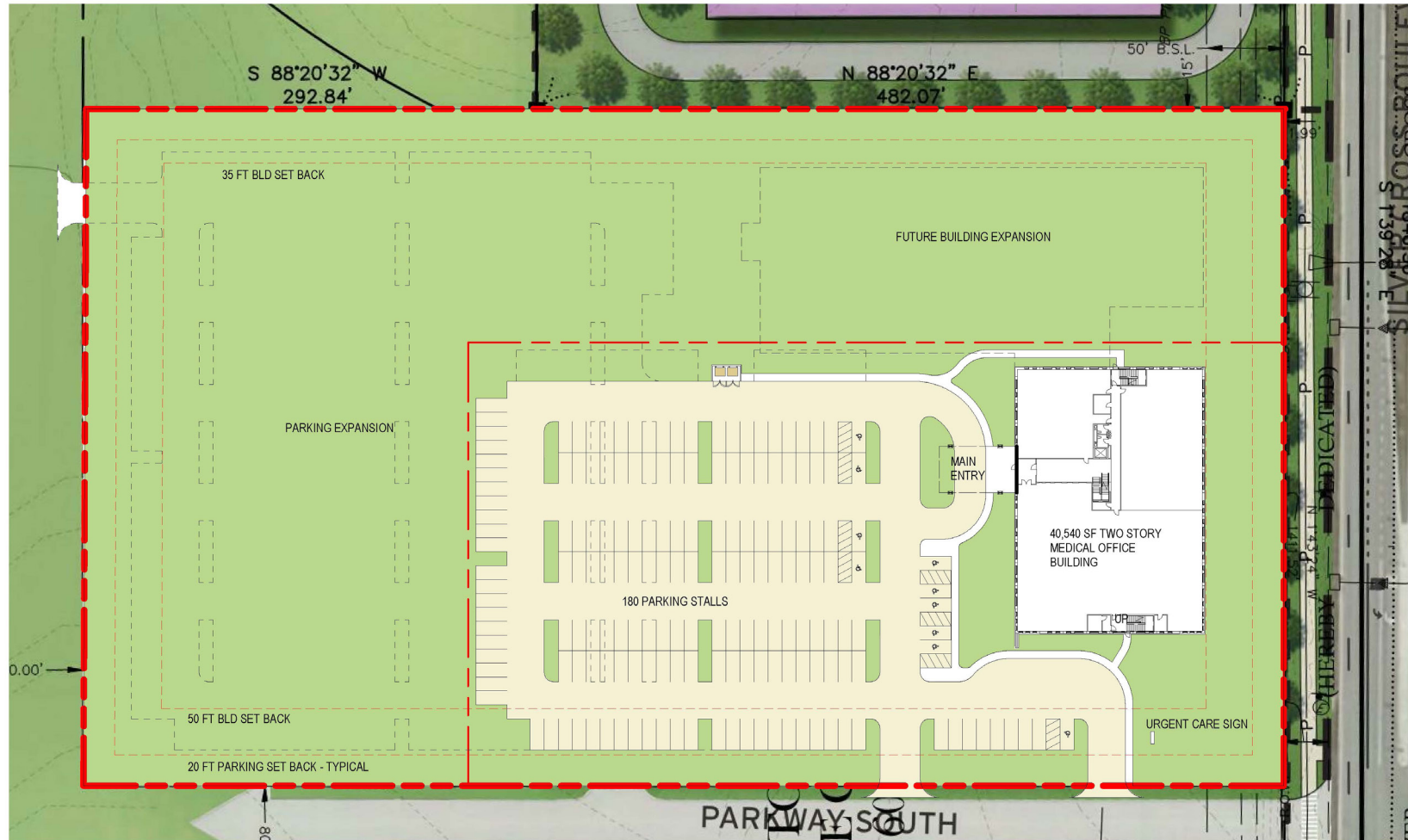
SILVER CROSS HOSPITAL CAMPUS

1851 Silver Cross Boulevard, New Lenox, IL



SITE PLAN

1851 Silver Cross Boulevard, New Lenox, IL



SITE PLAN

FLEXIBLE FLOOR PLATES - FIRST FLOOR

1851 Silver Cross Boulevard, New Lenox, IL



FLEXIBLE FLOOR PLATES - SECOND FLOOR

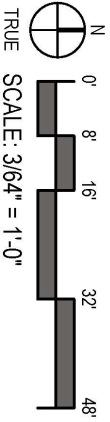
1851 Silver Cross Boulevard, New Lenox, IL



PRIMECARE

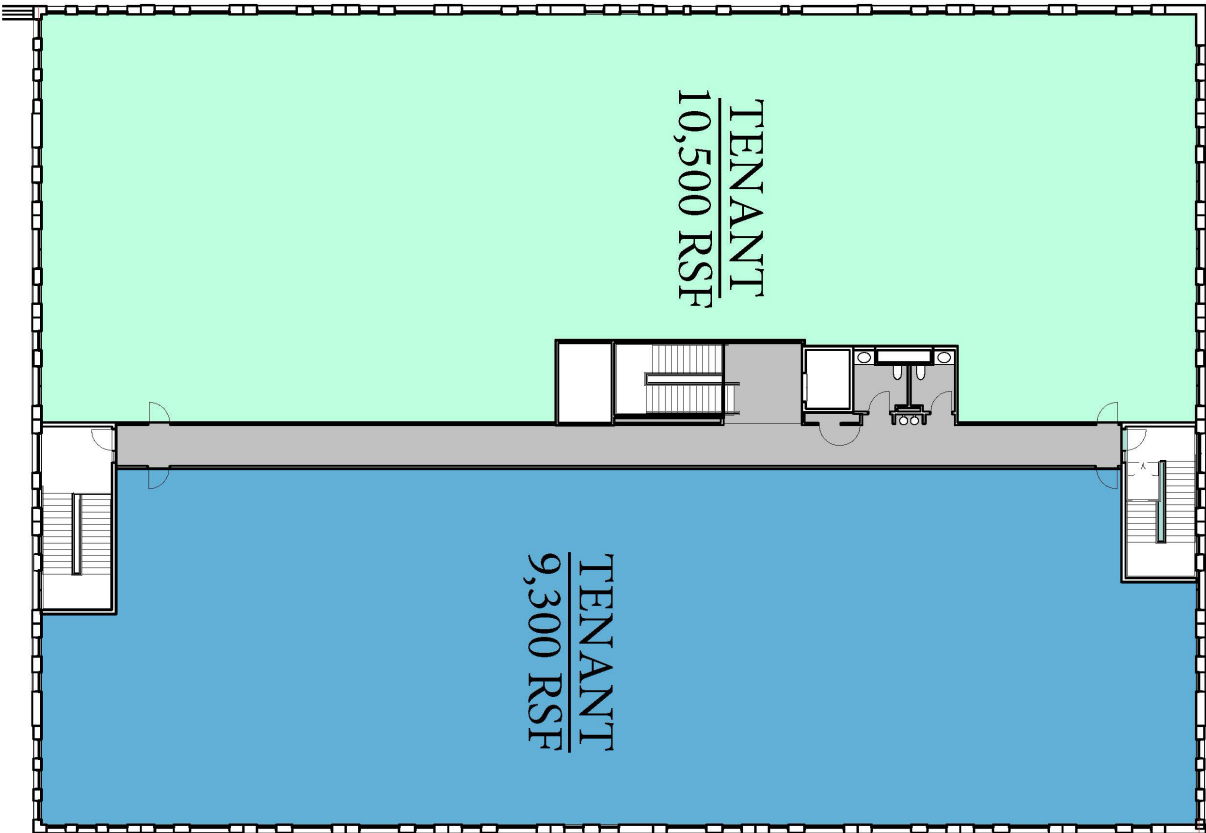
SILVER CROSS MOB

417.7488
03/06/19



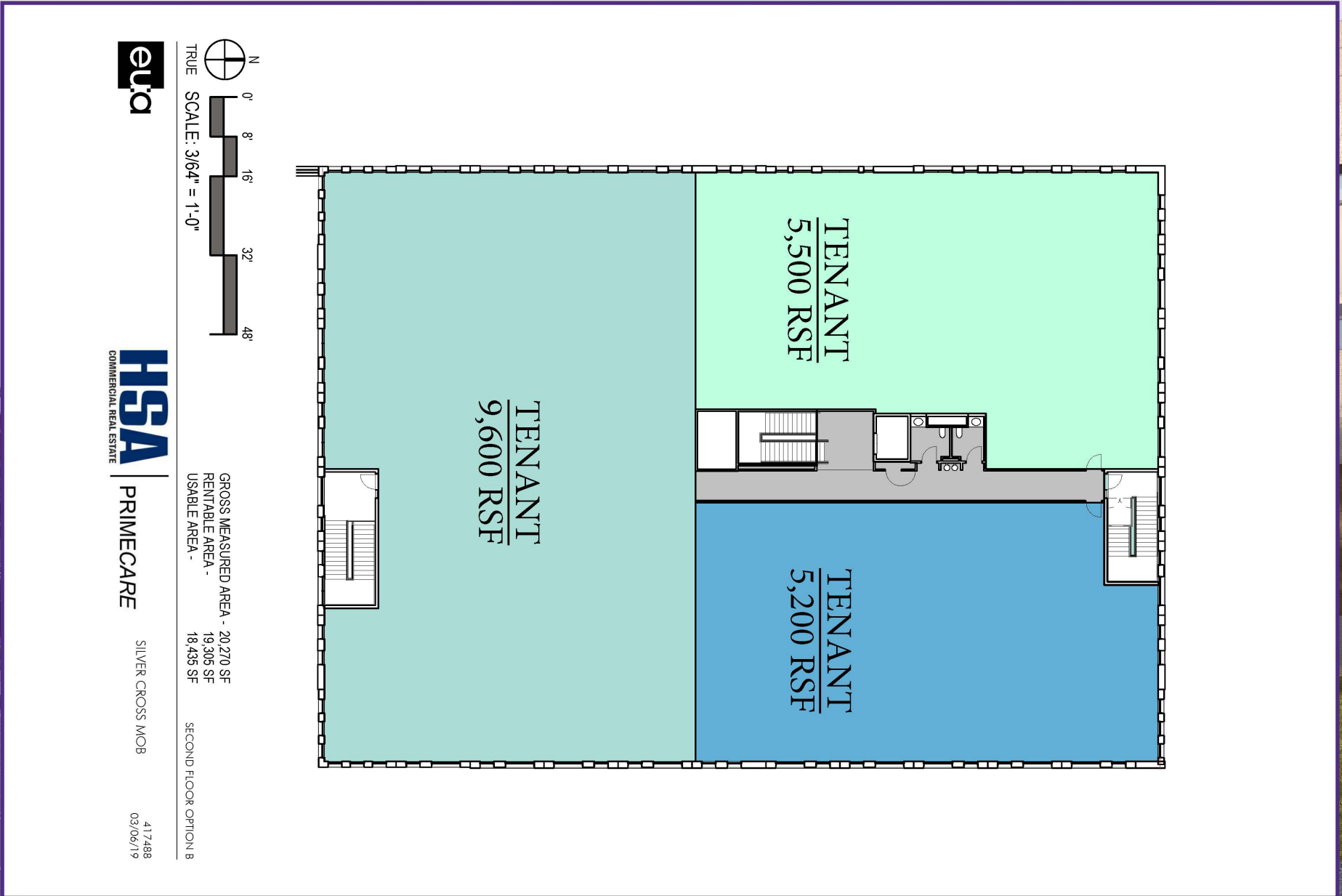
GROSS MEASURED AREA - 20,270 SF
RENTABLE AREA - 19,305 SF
USABLE AREA - 17,997 SF

SECOND FLOOR OPTION A



FLEXIBLE FLOOR PLATES - SECOND FLOOR ALTERNATE LAYOUT

1851 Silver Cross Boulevard, New Lenox, IL



ABOUT SILVER CROSS HOSPITAL

1851 Silver Cross Boulevard, New Lenox, IL

- Nationally recognized with straight As in Patient Safety by the Leapfrog Group
- One of America's "Friendliest Hospitals"
- State-of-the-art facilities and technology



NEW LENOX, ILLINOIS

1851 Silver Cross Boulevard, New Lenox, IL

- Located at the intersection of I-55, I-80 and I-355, New Lenox is well positioned for economic growth and opportunity
- The only community in the State of Illinois to be designated as a **Safe** community by the National Safety Council and the World Health Organization Collaborating Centre on Community Safety Promotion
- One of the Best Places to Raise a Family in Illinois in 2018 according to wallethub.com
- 38 new business opened in 2018 and 2019 with more development planned for 2019
- KHovanian Homes is developing 612 ranch-style single family homes for residents 55 years and older
- 24th Best City in Illinois in 2019 for jobs according to wallethub.com
- Highly-rated schools
- Average Household Income: \$116,124



ABOUT HSA PRIMECARE

Leading Developer & Manager of Healthcare Facilities

Other HSA PrimeCare Developments Include:

Silver Cross Health Center - New Lenox, IL



University of Chicago Cancer Center - New Lenox, IL



Silver Cross Business Center - New Lenox, IL



Franciscan St. Anthony Outpatient Center - Lowell, IN



Froedtert & the Medical College of Wisconsin Drexel Town Square Health Center - Oak Creek, WI



Franciscan Health Woodland Cancer Care Center - Michigan City, IN



Advocate Medical Campus Southwest - Tinley Park, IL



Loyola Gottlieb Center for Immediate Care - River Forest, IL



Coffee Creek Medical Office Building - Chesterton, IN

