

Property Highlights

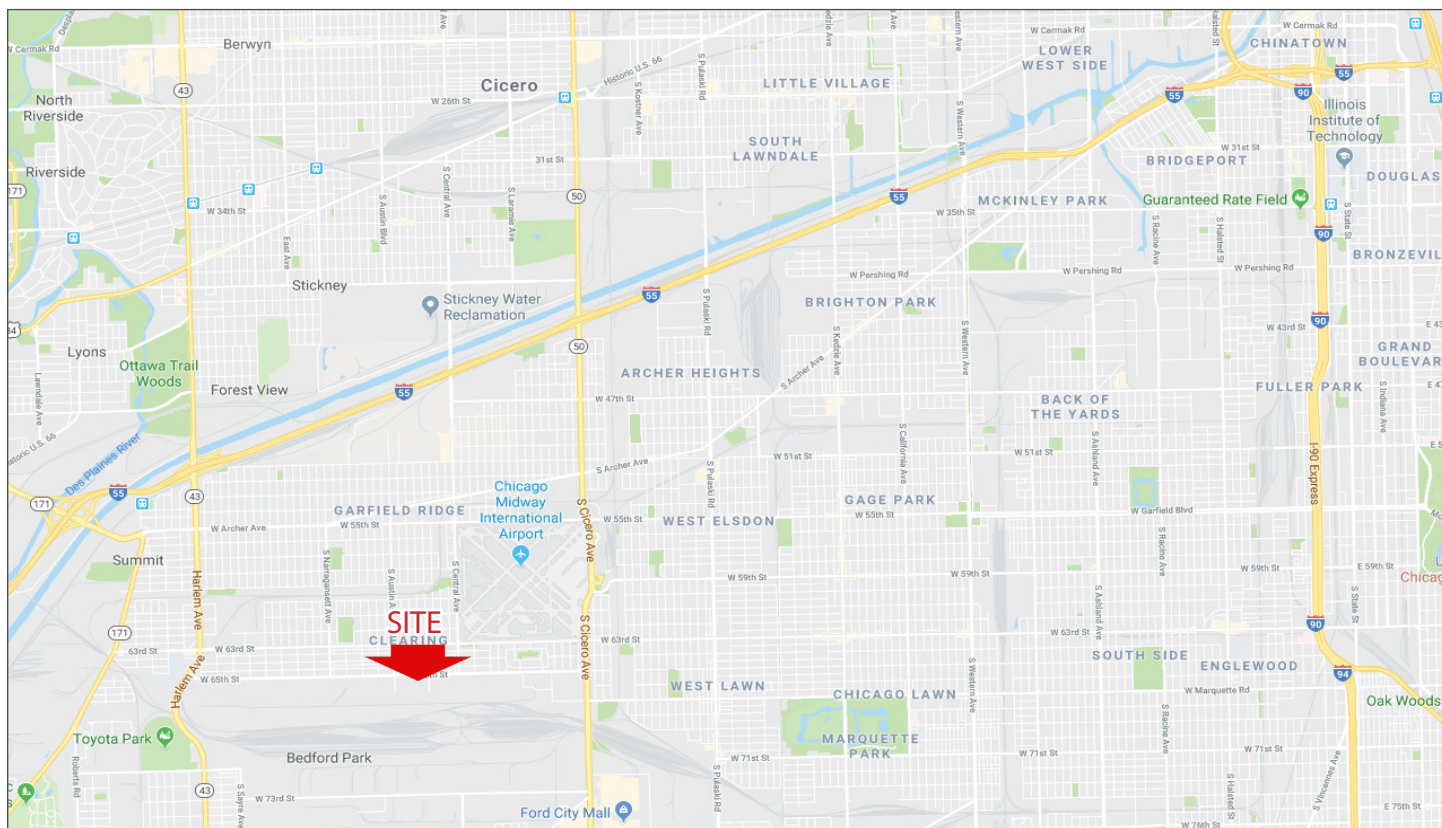
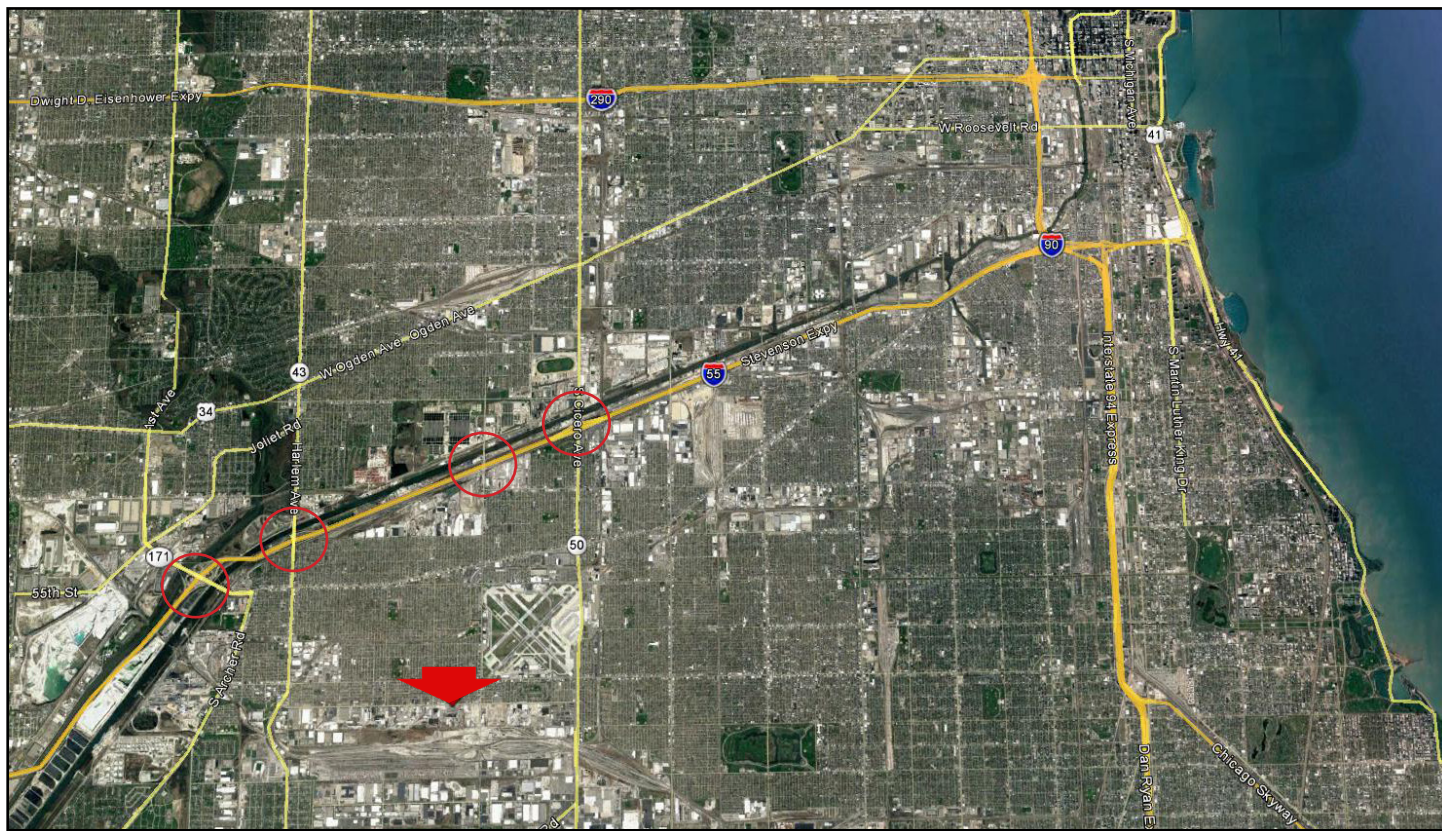
- Approximately 10.6 AC total.
- Located in the “Last Mile” distribution to downtown Chicago.
- Possible TIF funds available.
- Less than 1 mile to Midway International Airport.
- 2.7 miles to Central Avenue / 3.1 miles to Harlem Avenue & I-55 Interchange.
- Close proximity to UPS, FedEx, & USPS parcel sorting hubs.
- Sale Price: \$5,540,000
- Taxes: \$180,148 (2016)

Contact

Tim Thompson, SIOR
 p 312.683.7260
 c 847.217.0290
 tthompson@hsacommercial.com

FOR SALE Excellent Redevelopment Opportunity

SWC of West 65th Street & Menard Avenue | Bedford Park, Illinois



HSA Commercial: 100 S Wacker Drive, Suite 950 | Chicago, Illinois 60606 | www.hsacommercial.com

Above information is subject to verification and no liability for errors or omissions is assumed. Price is subject to change and listing may be withdrawn without notice.