

FOR LEASE Medical Office Suites Available

Elizabeth Park South Medical Center | 4501 S 70th Street | Lincoln, Nebraska



Property Highlights

- Highly accessible location at 70th Street and Pioneers Boulevard
- Tenants include Lincoln Pediatric Group, Lincoln Behavioral Health, and CHI/East Lincoln Internal Medicine
- 3 miles south of St. Elizabeth Regional Medical Center
- Ample parking: 5 spaces per 1,000 SF
- Divisible to 5,000-10,000 SF



Suite	SF Available	Condition
130	24,634 SF	Existing Medical Office Build-Out

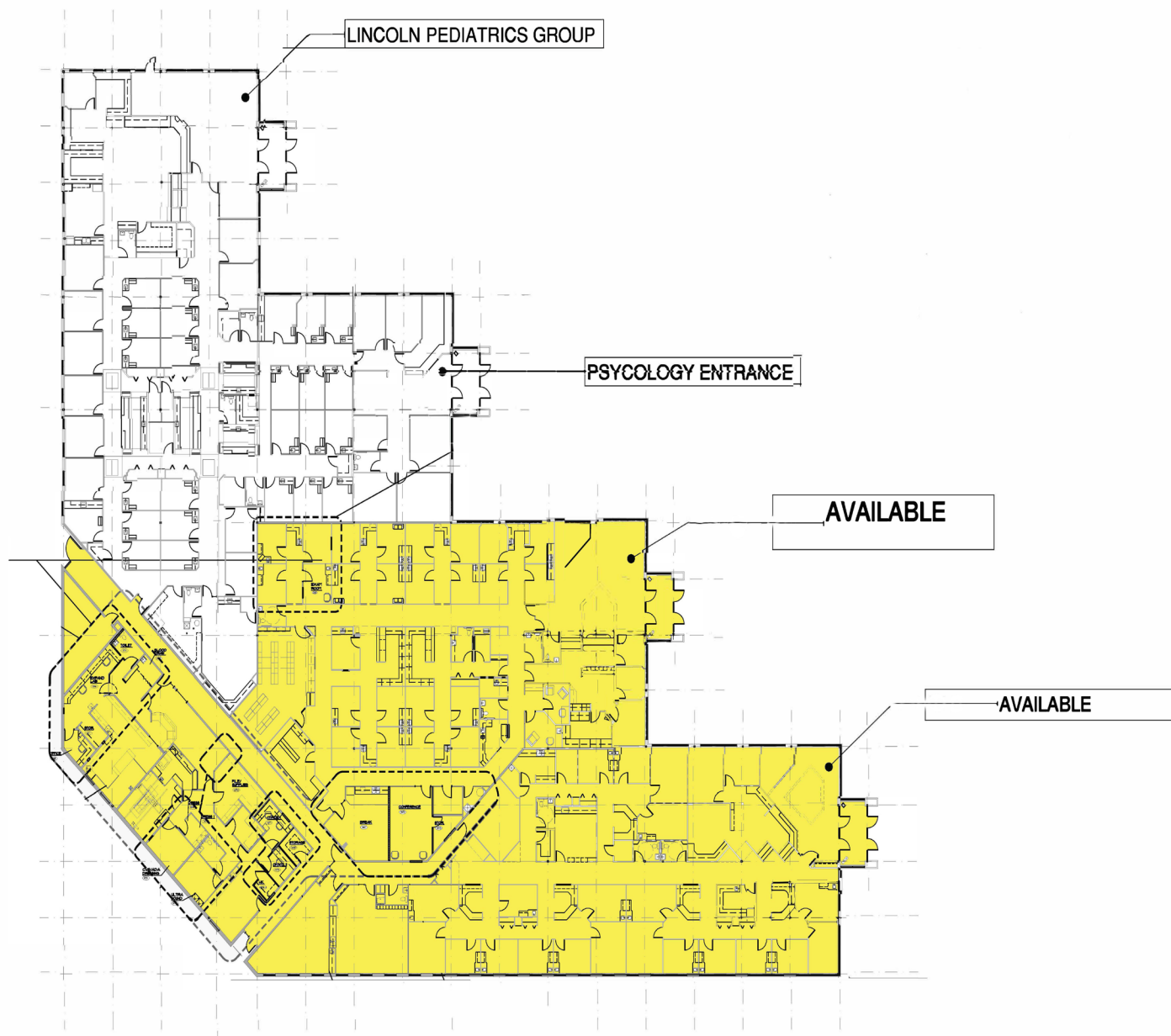
Contact

Robert Titzer
 p 312.458.4468
 rtitzer@hsacommercial.com

MEDICAL OFFICE SUITES FOR LEASE

Elizabeth Park South Medical Center | 4501 S 70th Street | Lincoln, Nebraska

Suite 130 Floor Plan - 24,634 SF



EXISTING FLOOR PLAN

4501 SOUTH 70TH STREET SUITE 130 LINCOLN, NE
 ELIZABETH PARK SOUTH