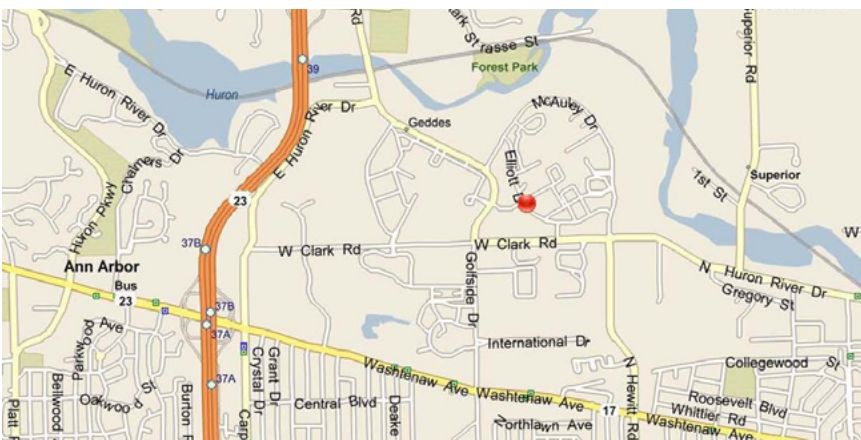




Property Highlights

Rare On-Campus Medical Space Available at St. Joseph Mercy Ann Arbor Hospital

- Suite 201 - 5,308 RSF Available
- Fully built-out medical space
- Indoor connection to hospital
- Ample on-site parking
- Immediate occupancy



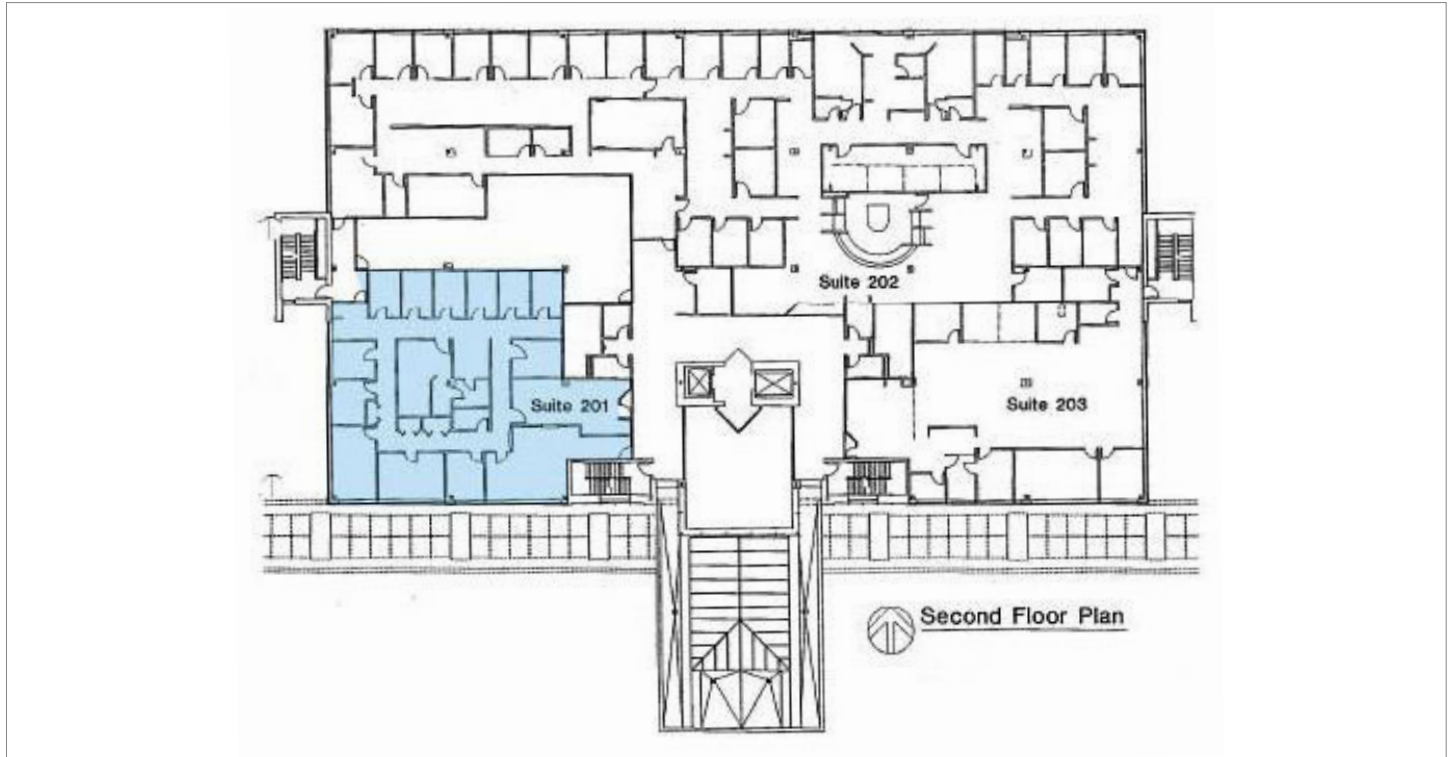
Contact

Robert Titzer
 p 312.458.4468
rtitzer@hsacommercial.com

FOR LEASE Medical Office Space at St. Joseph Mercy Ann Arbor Hospital

Michigan Orthopedic Center | 5315 Elliott Drive | Ypsilanti, Michigan

Suite 201 Floor Plan - 5,308 RSF



Campus Aerial Map - St. Joseph Mercy Ann Arbor Hospital

