

FOR LEASE South I-355 Medical Office Space

15900 West 127th Street | Lemont, Illinois



Property Highlights

- Lemont Professional Center addresses the strong population growth and need for outpatient services and physicians for the residents of the south I-355 corridor communities
- Immediate access to interchange at 127th Street and the I-355 extension
- Beautiful campus setting
- Fully improved medical and dental suites available
- Over 200 parking spaces in lighted lot
- Current medical services in the building include: walk-in care center, imaging, ophthalmology, OB/GYN, pediatrics, internal medicine, and dental care
- Professionally managed by HSA PrimeCare

Suite	Sq. Ft. Available	Condition
121	2,446 SF	Second Generation Medical Office Suite
200	1,891 SF	Second Generation Medical Office Suite
220-240	1,150-4,475 SF	Contiguous Second Generation Medical Office Space
241	3,088 SF	Ready to Occupy Spec Office Space

Virtual Tours by Suite
121
200
230
240
241

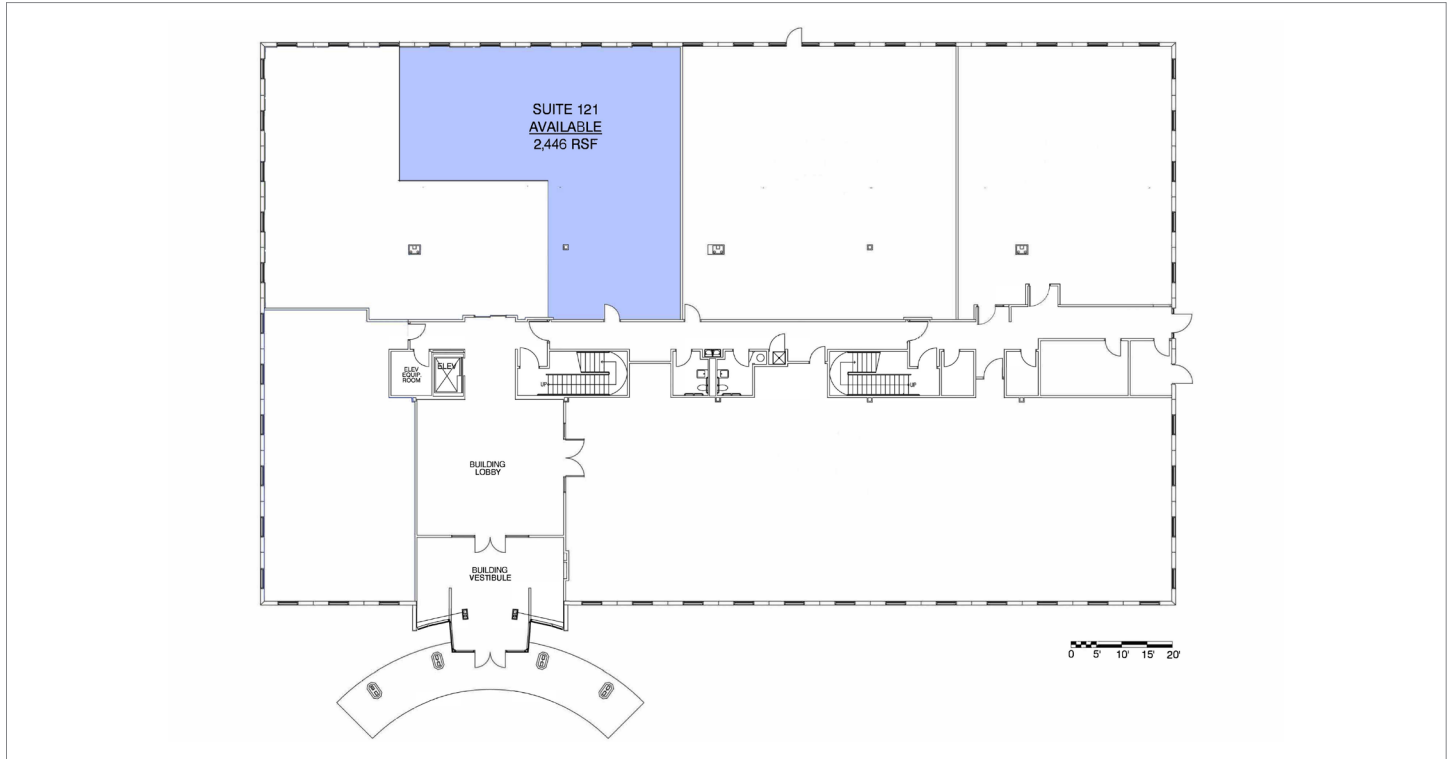
Contact

Robert Titzer
 p 312.458.4468
 rtitzer@hsacommercial.com

FOR LEASE South I-355 Medical Office Space

15900 West 127th Street | Lemont, Illinois

Floor Plan - 1st Floor



Floor Plan - 2nd Floor

