

# THE MAYFAIR COLLECTION

WAUWATOSA, WISCONSIN

9,200 SF Flagship Restaurant /  
Showroom Building



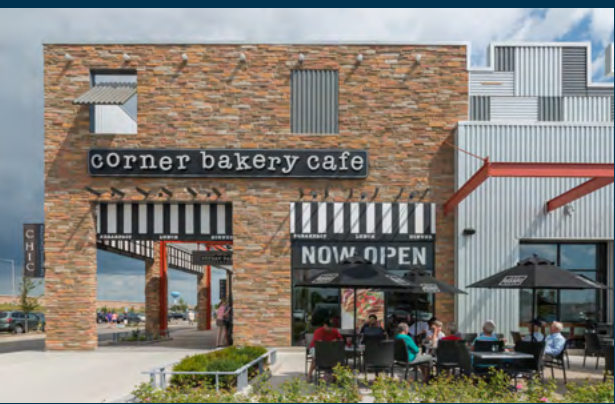
JOIN THESE  
GREAT RETAILERS  
AND BUSINESSES



Plus: Over 1,000 Proposed  
Luxury Apartments!



HSA Commercial, Inc.  
100 South Wacker Drive, Suite 950 | Chicago, Illinois 60606  
[www.hsacommercial.com](http://www.hsacommercial.com)



# NEW RESTAURANT / RETAIL OPPORTUNITIES AT THE MAYFAIR COLLECTION

JOIN THESE GREAT RETAILERS AND BUSINESSES



Highway 45 141,000 VPD



Burleigh Street



## 9,200 SF Restaurant / Showroom

- Full-service restaurant space ideal for steakhouse, brewpub, retail showroom, or salon-spa
- Shell construction now complete
- Located at the main entrance to The Mayfair Collection
- Flagship, round-house style building design
- Outdoor seating area included
- Convenient access to surface and structured parking
- Rooftop signage visible from 141,000 VPD on Highway 45

*West Elevation*



*Interior*



THE MAYFAIR COLLECTION  
WAUWATOSA, WISCONSIN



**THE MAYFAIR COLLECTION**  
WAUWATOSA, WISCONSIN

**Restaurant / Showroom  
Opportunities Available**

**PHASE V  
PROPOSED  
CORPORATE OFFICE**

**PHASE II - COMPLETE  
146-ROOM HOTEL**

**SYNERGY  
APARTMENTS  
269 UNITS  
NOW OPEN!**

**PHASE IV  
PROPOSED  
220-UNIT  
SENIOR TOWER**

**PHASE II - COMPLETE  
WHOLE FOODS**

**PHASE I - COMPLETE  
FASHION RETAIL**

**SITE**

**TJ-maxx**  
DSW  
DESIGNER SPACE WAREHOUSE

**OLD NAVY**

**NORDSTROM  
rack**

**DICK'S  
SPORTING GOODS**

**ULTA**

**J.CREW  
FACTORY**

**Corner  
Bakery**

**Golden West  
pancakes & cafe**

**HOMESWOOD  
SUITES  
Hilton**

**at&t**

**verizon**

**PAUL MITCHELL  
the school**

**HomeGoods**

**WHOLE  
FOODS  
MARKET**

**GOOD CITY  
PRODUCE**





# THE MAYFAIR COLLECTION

WAUWATOSA, WISCONSIN

11250 W Burleigh Street | Wauwatosa, Wisconsin

**OWNED / DEVELOPED BY**

**HSA**  
COMMERCIAL REAL ESTATE

**RESIDENTIAL DEVELOPMENT BY**

 **Fiduciary**  
REAL ESTATE DEVELOPMENT, INC

**ARCHITECTURE**

**TOA**  
ARCHITECTURE

**CHRIS THOMAS**

312.519.9624

[cthomasia@toadesigns.com](mailto:cthomasia@toadesigns.com)

**RETAIL LEASING**

**HSA**  
COMMERCIAL REAL ESTATE

**TIM BLUM**

312.683.7256

[tblum@hsacommercial.com](mailto:tblum@hsacommercial.com)

**CONTRACTOR**

 **PREMIER**  
DESIGN + BUILD GROUP

**ALEC ZOCHER**

847.297.4200

[info@pdbgroup.com](mailto:info@pdbgroup.com)

**BRENTON SCHRADER**

312.458.4392

[bschrader@hsacommercial.com](mailto:bschrader@hsacommercial.com)

*Above information is subject to verification and no liability for errors or omissions is assumed. Price is subject to change and listing may be withdrawn without notice.*