

FOR LEASE 1,398 SF Medical Office Suite Available

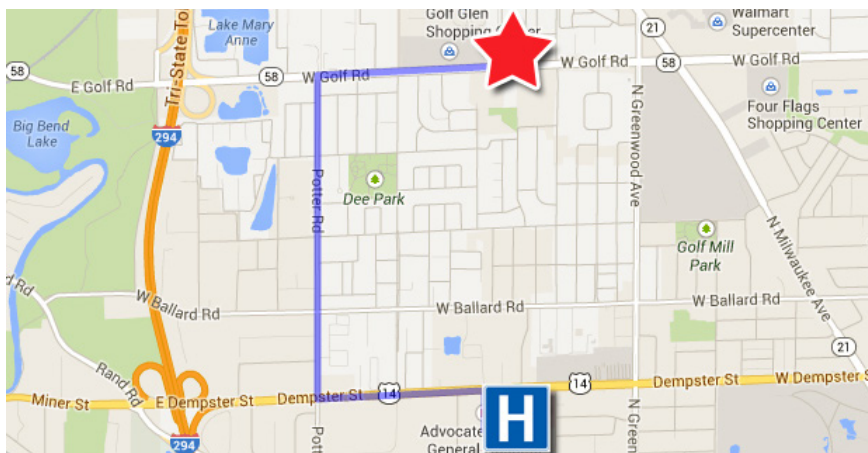
Golf Surgical Center | 8901 Golf Road | Des Plaines, Illinois



Property Highlights

Lutheran General Hospital is located less than one mile to the south!

- Suite 205 - 1,398 RSF
- Tenant improvement allowance available
- Renovated common areas
- Surgery center located on 1st floor



Contact

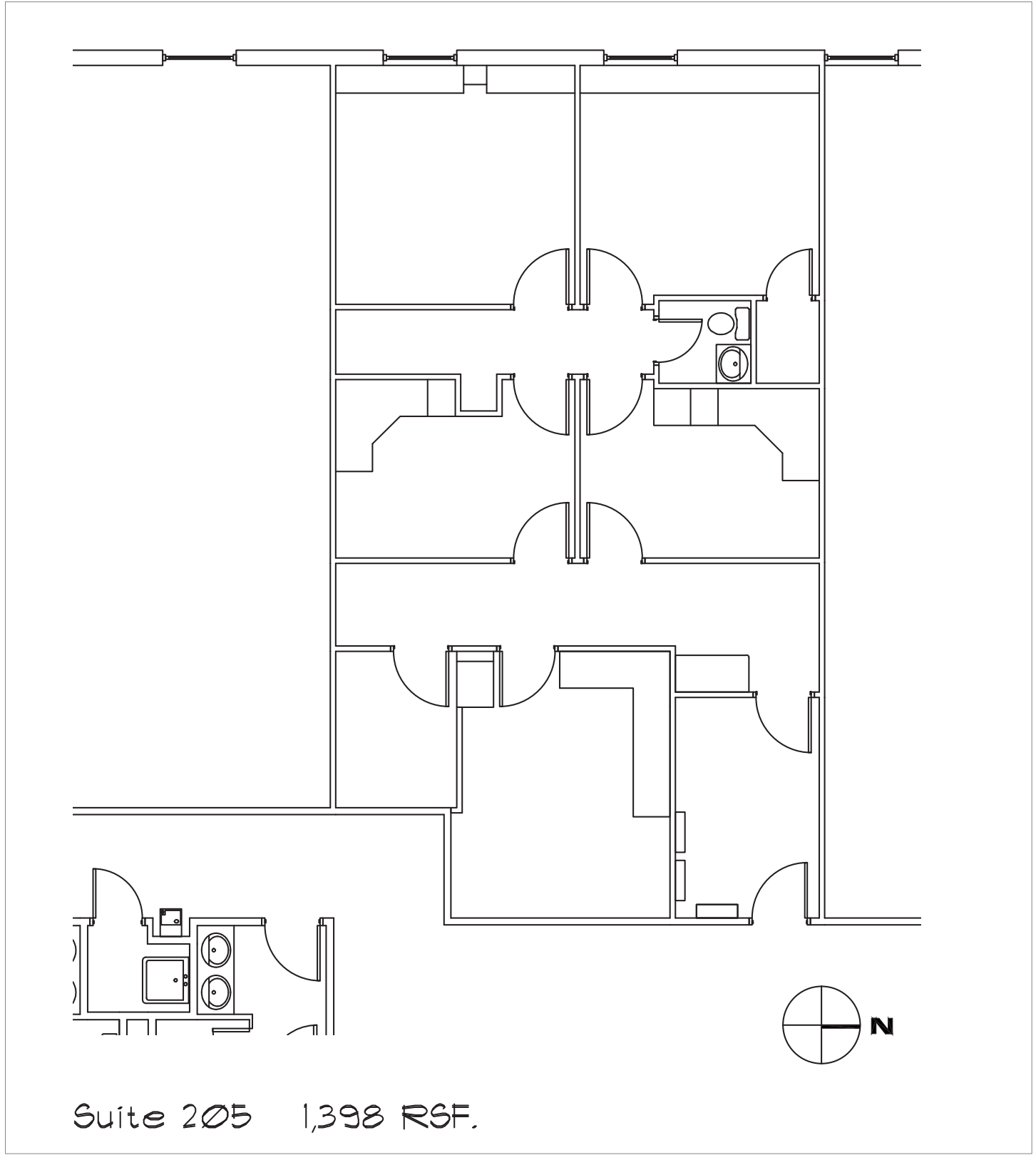
Robert Titzer
 p 312.458.4468
 rtitzer@hsacommercial.com

HSA Commercial: 100 S Wacker Drive, Suite 950 | Chicago, Illinois 60606 | www.hsacommercial.com

Above information is subject to verification and no liability for errors or omissions is assumed. Price is subject to change and listing may be withdrawn without notice. HSA Commercial Inc. and listing broker are members and/or officers of the ownership entity and are licensed RE Brokers.

FOR LEASE 1,398 SF Medical Office Suite Available
Golf Surgical Center | 8901 Golf Road | Des Plaines, Illinois

Suite 205 Space Plan



Suite 205 1,398 RSF.