

## FOR LEASE New Move-In Ready Medical Suites Available!

1012 West 95th Street | Naperville, Illinois



### Property Highlights

- **456 SF - 4,475 SF suites available**
- Move-in ready medical suites
- Ample Parking: 5.5 spaces per 1,000 SF
- Easily accessible for patients in Naperville, Plainfield, Aurora, and Bolingbrook
- Highly visible location at the intersection of 95th Street and Plainfield-Naperville Road
- Close proximity to major hospitals, including AMITA Hospital (7 miles), Edwards Hospital (4.5 miles), & Rush-Copley (7 miles)
- Professionally managed by HSA PrimeCare

### Medical Suites Available:

Suite	SF Available	Condition
11	456 SF	Move-In Ready Counseling Office with 1 exam room and waiting area
7	1,801 SF	Move-In Ready Medical Suite with 5 exam rooms
4	4,475 SF	Move-In Ready Medical Suite with 10 exam rooms

### Contact

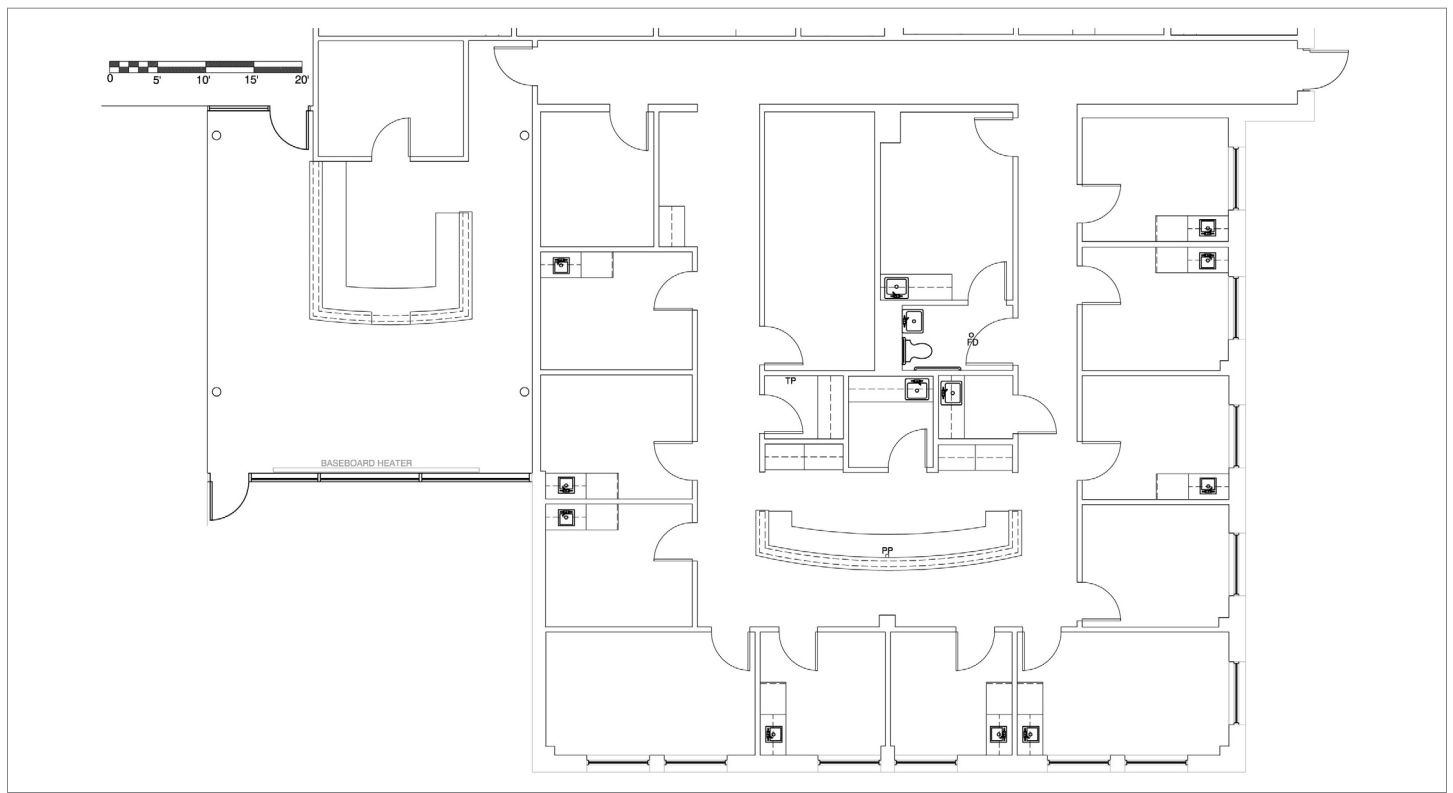
Robert Titzer  
 p 312.458.4468  
 rtitzer@hsacommercial.com

Olivia Wirth  
 p 312.458.4387  
 owirth@hsacommercial.com

# FOR LEASE New Move-In Ready Medical Suites Available!

1012 West 95th Street | Naperville, Illinois

Suite 4 (4,475 RSF) Floor Plan:



Suite 7 (1,801 RSF) Floor Plan:

