

FOR LEASE +/- 3,400 SF Bucktown Retail Space Fronting Damen

1755 North Damen Avenue • Chicago • Illinois



Property Profile

Space Available | +/- 3,400 SF
Trade Area Anchors | Marc by Marc Jacobs, BCBG Max Azria, The Dailey Method, Club Monaco, Lush Cosmetics, Intermix, Benefit, Lululemon

Traffic Counts

Damen Avenue | 12,800 VPD

Statistics	.25 mi	.5 mi	1 mi
Population	4,028	15,598	56,828
Average HHI	\$149,425	\$120,017	\$103,125
Households	2,054	7,932	26,833
Employment	1,985	6,213	27,966

Property Highlights

- Flagship Bucktown retail space on trendy Damen Avenue surrounded by national designer co-tenants
- Redevelopment in progress includes new windows along frontage and great signage options
- Adjacent to future access point to the Bloomingdale Trail
- Hardwood floor and exposed timber beams in retail space

Contact

Michael Havdala
p 312.458.4318
mhavdala@hsacommercial.com

Brenton Schrader
p 312.458.4392
bschrader@hsacommercial.com

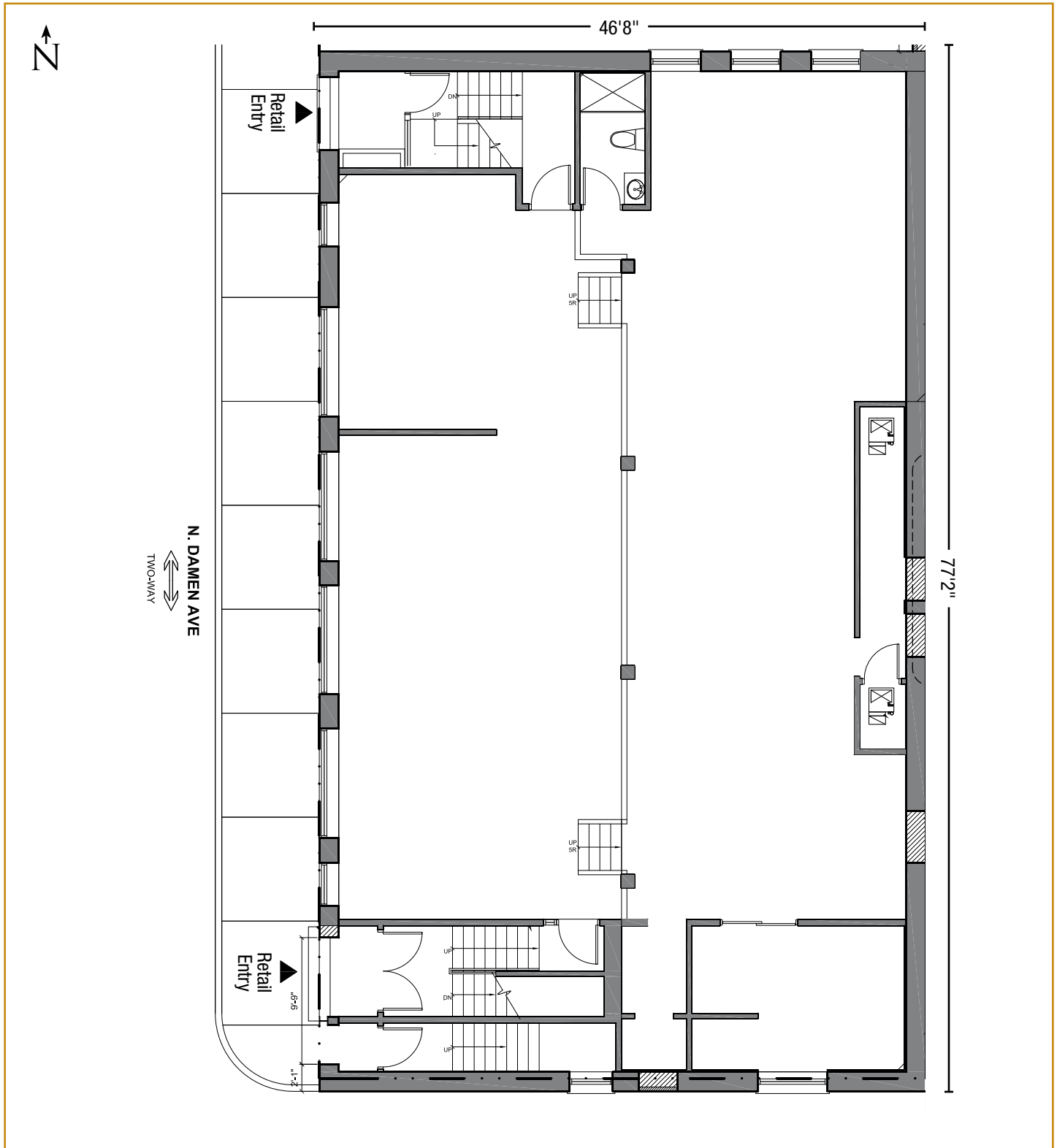


HSA Commercial: 233 S Wacker Drive, Suite 350 • Chicago • Illinois • 60606 • hsacommercial.com
Above information is subject to verification and no liability for errors or omissions is assumed. Price is subject to change and listing may be withdrawn without notice.

FOR LEASE +/- 3,400 SF Bucktown Retail Space Fronting Damen

1755 North Damen Avenue • Chicago • Illinois

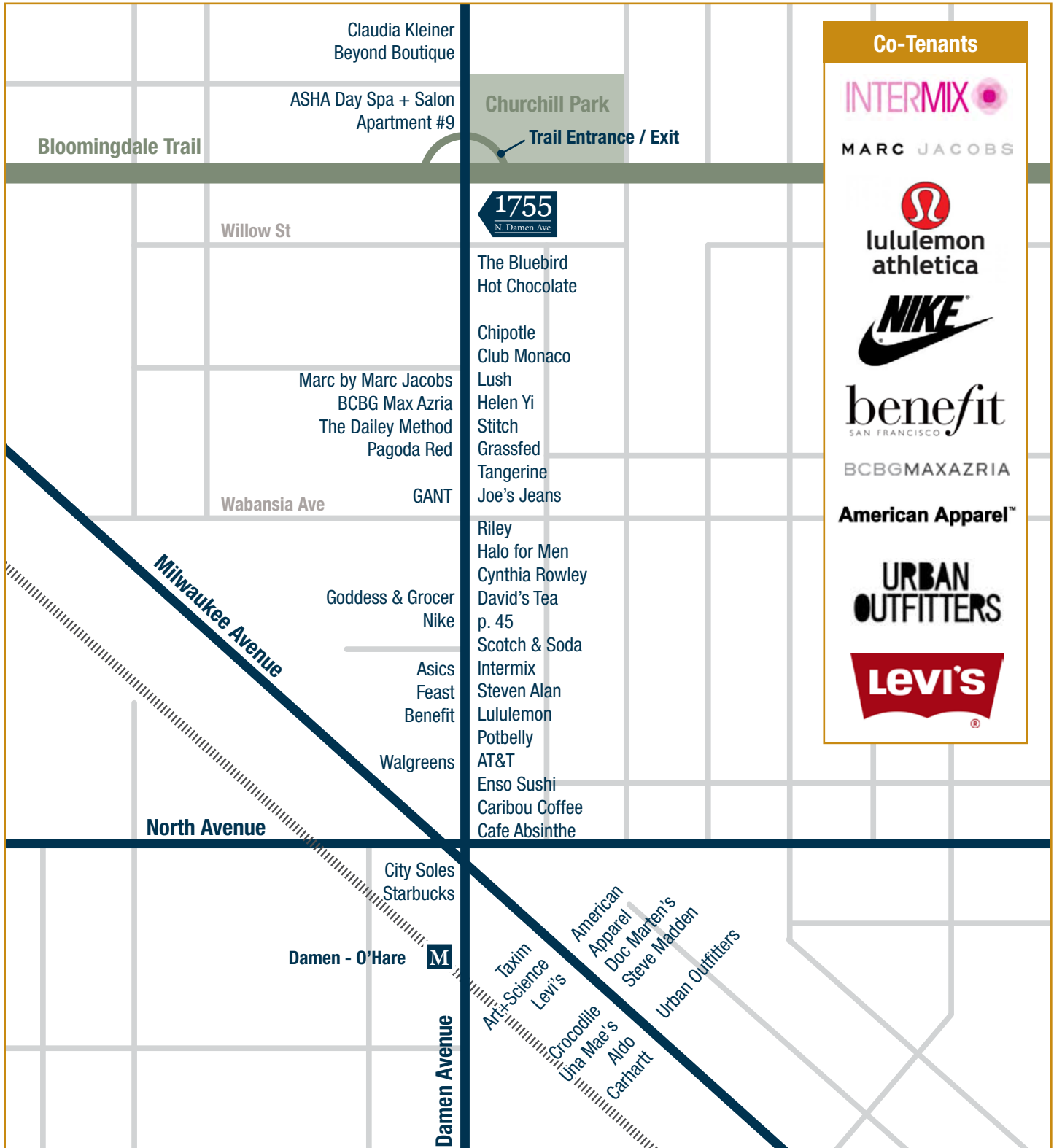
Floor Plan



FOR LEASE +/- 3,400 SF Bucktown Retail Space Fronting Damen

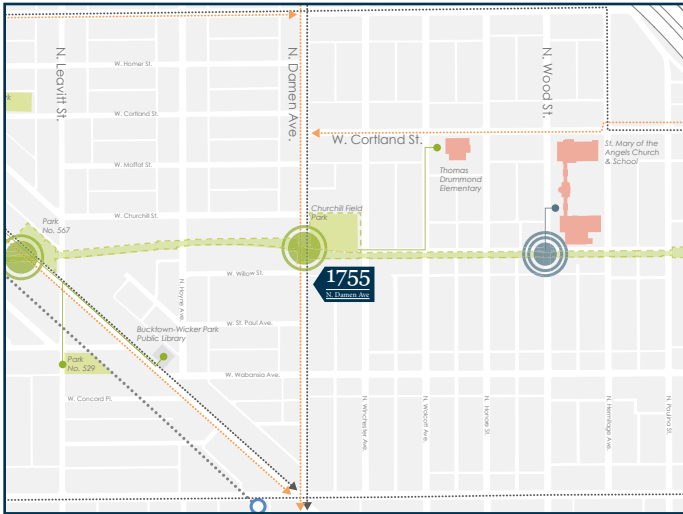
1755 North Damen Avenue • Chicago • Illinois

Trade Area Map



FOR LEASE +/- 3,400 SF Bucktown Retail Space Fronting Damen

1755 North Damen Avenue • Chicago • Illinois



The 606: Bloomingdale Trail Renovation

The renovation of the Bloomingdale Trail, the project titled "The 606", will offer trails for bikers, runners, and walkers, event spaces, alternative transportation avenues, and green, open space along the former Metra train tracks from Ashland Avenue to Ridgeway Avenue.

Users of the Bloomingdale Trail will be able to exit on either side of Damen Avenue (a designated Priority Access Point) including just north of 1755 N. Damen in Churchill Park where an event plaza will be added.

Construction is already underway. Click on the link below for updates: <http://the606.org/news-press-releases/>



HSA Commercial: 233 S Wacker Drive, Suite 350 • Chicago • Illinois • 60606 • hsacommercial.com
Above information is subject to verification and no liability for errors or omissions is assumed. Price is subject to change and listing may be withdrawn without notice.