

## FOR LEASE Fully Built-Out Medical Office Suites Available

Golf Surgical Center | 8901 Golf Road | Des Plaines, Illinois

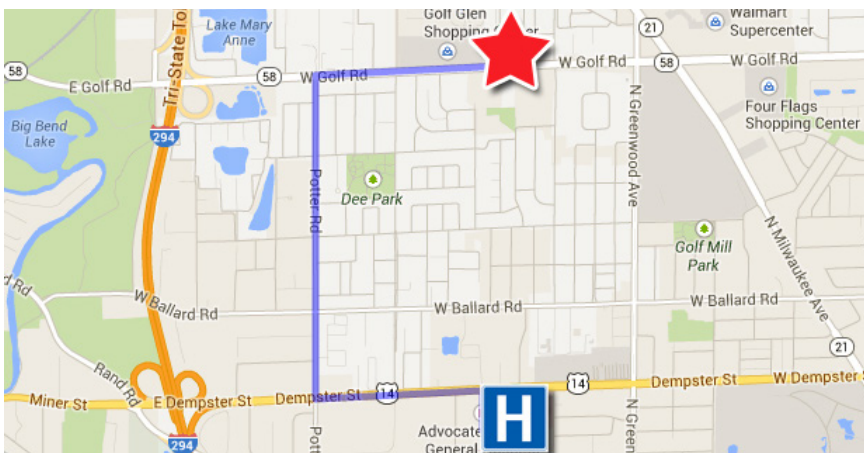
# BROKER SPECIAL:

## \$1.50 PER SF/YR COMMISSIONS\*

### Property Highlights

*Lutheran General Hospital is located less than one mile south!*

- Suite 203 - 2,017 RSF
- Suite 205 - 1,398 RSF
- Available suites combinable to 3,415 RSF
- Tenant improvement allowance available
- Renovated common areas
- Surgery center located on 1st floor



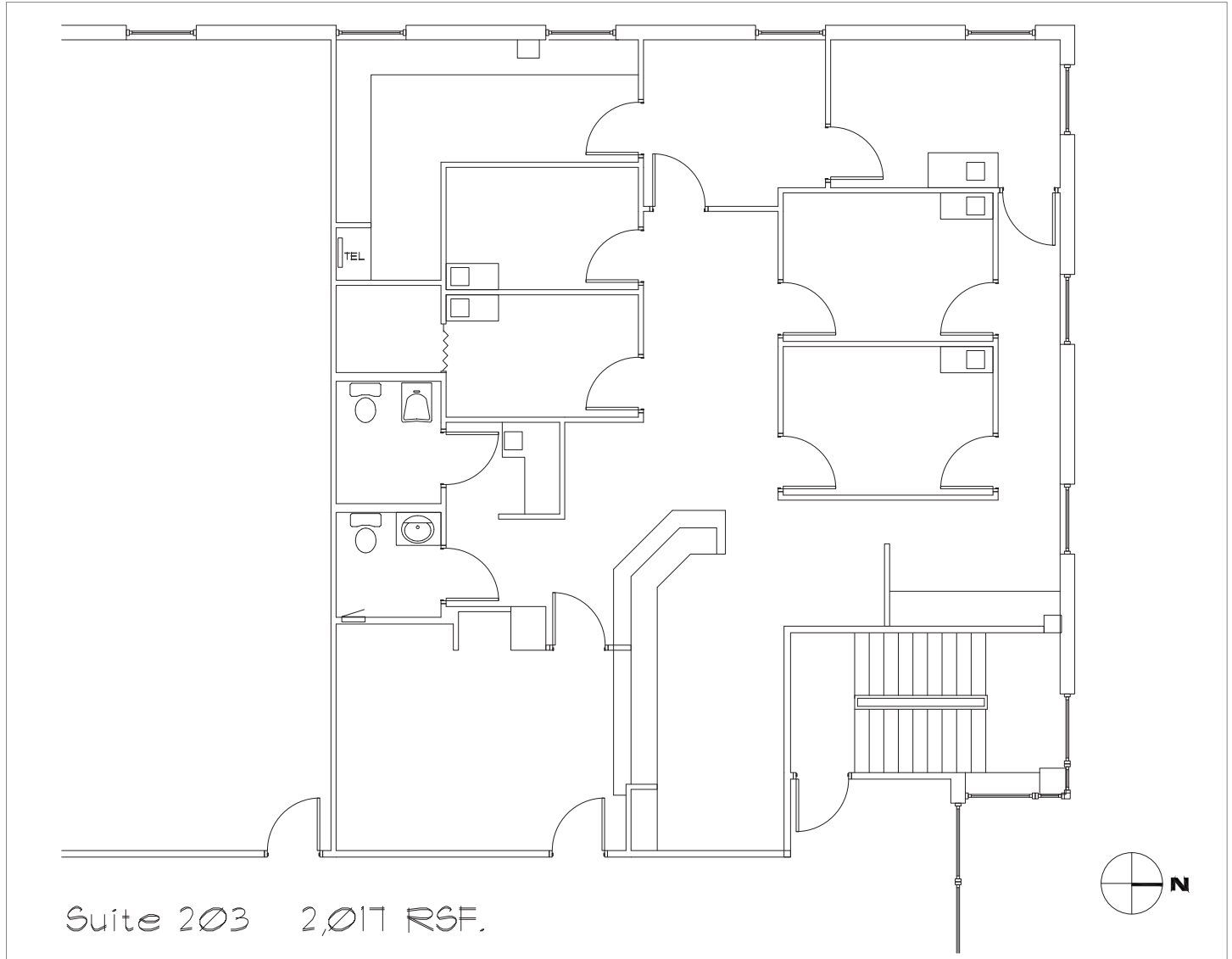
### Contact

Robert Titzer  
 p 312.458.4468  
 rtitzer@hsacommercial.com

HSA Commercial: 100 S Wacker Drive, Suite 950 | Chicago, Illinois 60606 | [www.hsacommercial.com](http://www.hsacommercial.com)

*Above information is subject to verification and no liability for errors or omissions is assumed. Price is subject to change and listing may be withdrawn without notice. HSA Commercial Inc. and listing broker are members and/or officers of the ownership entity and are licensed RE Brokers. \*Commission bonus applies to new leases only. Leases must be executed by June 30, 2019.*

### Suite 203 Space Plan



Suite 203 2,017 RSF.

