


SUMMER BROKER SPECIAL:

\$1.50 PER SF/YR COMMISSIONS*
\$100 GIFT CERTIFICATES
FOR QUALIFIED SHOWINGS**

Property Highlights

- Lemont Professional Center addresses the strong population growth and need for outpatient services and physicians for the residents of the south I-355 corridor communities
- Immediate access to interchange at 127th Street and the I-355 extension
- Beautiful campus setting
- Fully improved medical and dental suites available
- Over 200 parking spaces in lighted lot
- Current medical facilities in the building include: walk-in care center, orthopedics, radiology, ophthalmology, OB/GYN, pediatrics, internal medicine, and dental care
- Professionally managed by HSA PrimeCare
- A  COLONY NORTHSTAR property

Suite	Sq. Ft. Available	Condition
220	1,150 SF	Shell
230	1,416 SF	Ready Medical Office Suite
240	1,909 SF	Ready Medical Office Suite
241	3,088* SF	Ready Office Suite
221/231	4,327* SF	Shell
201/211	3,216* SF	Ready Medical/Dental Suite
*10,631 SF of contiguous space is available on the 2nd floor.		

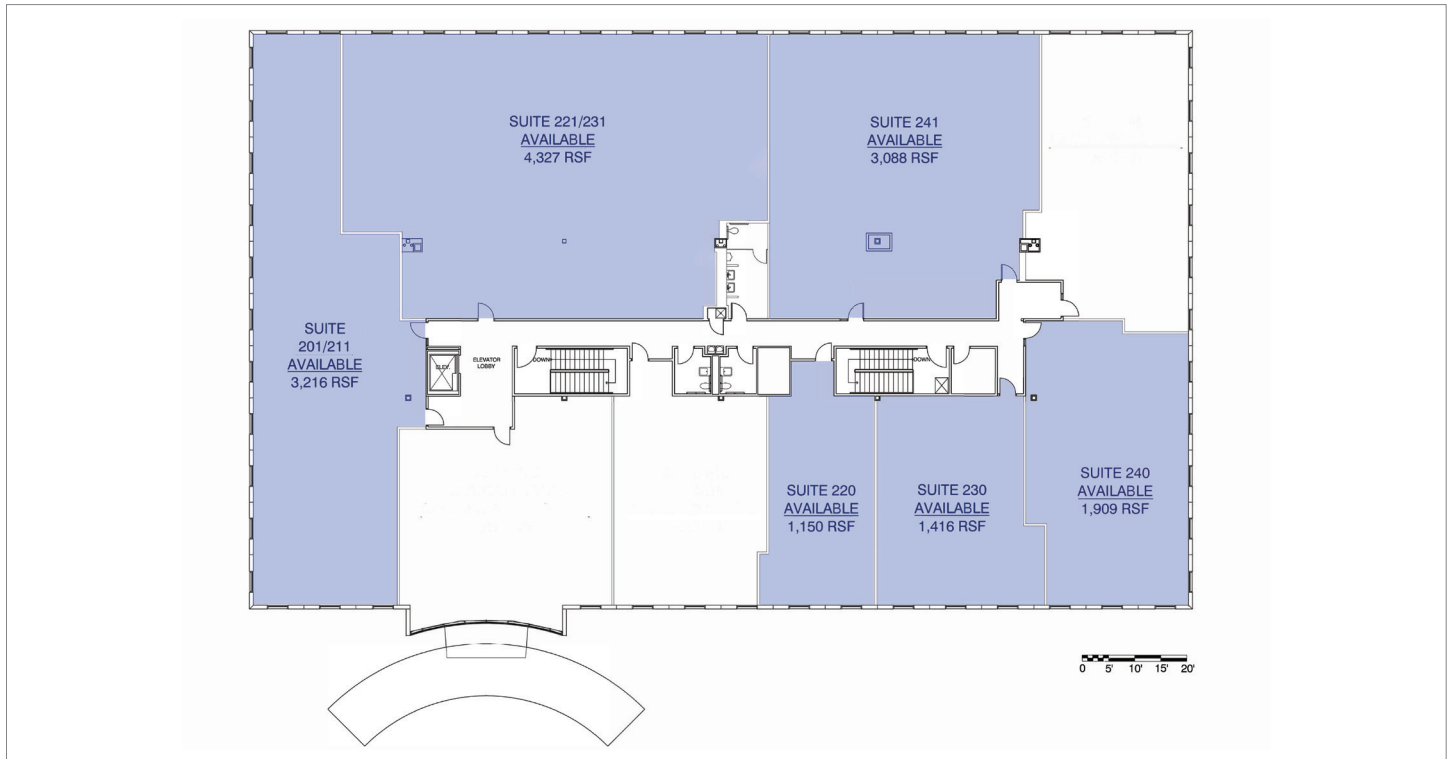
Contact

Robert Titzer
 p 312.458.4468
 rtitzer@hsacommercial.com

FOR LEASE South I-355 Medical Office Space

15900 West 127th Street | Lemont, Illinois

Floor Plan - 2nd Floor



Location

